

F. TROUBLESHOOTING

If the motor does not run:

- Check that you are using fresh batteries.
- Check that the batteries are inserted the correct way round in the battery case.
- Check that all four wires are touching the metal terminals.

If the small brush becomes loose, tighten up the bolts on its bracket.

G. HOW IT WORKS

The batteries provide electricity to the motor, which turns the rotor at high speed. The centre of gravity of the rotor is off to one side — it is not in line with the motor’s spindle. When the rotor spins, it makes the whole robot vibrate from side to side and up and down. The vibrations make the brushes jump off the surface and land again at high frequency. As the large brush lands after each vibration, its bristles bend, pushing the whole Robot a little the same way as the brush is angled. When the brush jumps again the bristles straighten up. This process is repeated again and again, making Brush Robot move along.

H. FUN FACTS

- Brush Robot is an example of a ‘vibrobot’ — a robot that moves along because it vibrates.
- A micro vibrobot is a tiny vibrobot made from a vibrating alarm from an old mobile phone and the head of a toothbrush.
- Some vibrobots are solar powered, so can keep jiggling along as long as the Sun shines.
- Brush vibrobots have been used to explore blocked pipes. Their bristles can go past obstructions that would stop the wheels of a normal robot.
- Vibrations are used in many industrial machines. For example, vibrating conveyors move materials such as powders by making them jump up and down at high frequency.
- In the construction industry, vibrating machines are used to remove air bubbles from fresh concrete and to compact loose rock and soil to make the ground firm.
- Robot vacuum cleaners automatically clean floors. They learn the layout of a room, clean it, and return to their base station to recharge their batteries.
- Many different materials are used to make brush bristles, including synthetic fibres, twigs, and horse and pig hairs. Synthetic fibres are made by pushing molten plastic or nylon through tiny holes.

KIDZROBOTIX SERIES



00-03270  
Tin Can Robot



00-03280  
Doodling Robot



00-03381  
Dragon Robot



00-03367  
Insectoid



00-03357  
Table Top Robot



00-03358  
Tin Can Cable Car



00-03380  
Smart Cleaner



00-03272  
Smart Robot



00-03906  
Electric Plane  
Launcher



00-03366  
Hover Racer

Questions & Comments

We value you as a customer and your satisfaction with this product is important to us. If you have comments or questions, or you find any part of this kit missing or defective, please do not hesitate to contact our distributor in your country. You will find the address printed on the package. You are also welcome to contact our Marketing Support Team: Email: infodesk@4m-ind.com, Fax (852) 25911566, Tel: (852) 28936241, Web site: WWW.4M-IND.COM

BRUSH  
ROBOT

PLEASE SCAN THE QR CODE FOR VIEWING MULTI-LANGUAGE INSTRUCTIONS.



FR. Veuillez scanner le code QR pour afficher les instructions multilingues pour ce kit. DE. Bitte scanne den QR-Code, um die mehrsprachige Anleitung für dieses Set anzusehen. NL. Scan de QR-code om de instructies voor deze set in verschillende talen te bekijken. IT. Scansiona il codice QR per visualizzare le istruzioni multi-lingua per questo kit. ES. Escanee el código QR para ver instrucciones en varios idiomas para este kit. JA. QRコードをスキャンして、本キットの多言語説明書をご覧ください。

WARNING:

CHOKING HAZARD - Small parts.  
Not for Children under 3 years.

TO PARENTS: PLEASE READ THROUGH THESE INSTRUCTIONS  
BEFORE GIVING GUIDANCE TO YOUR CHILDREN.

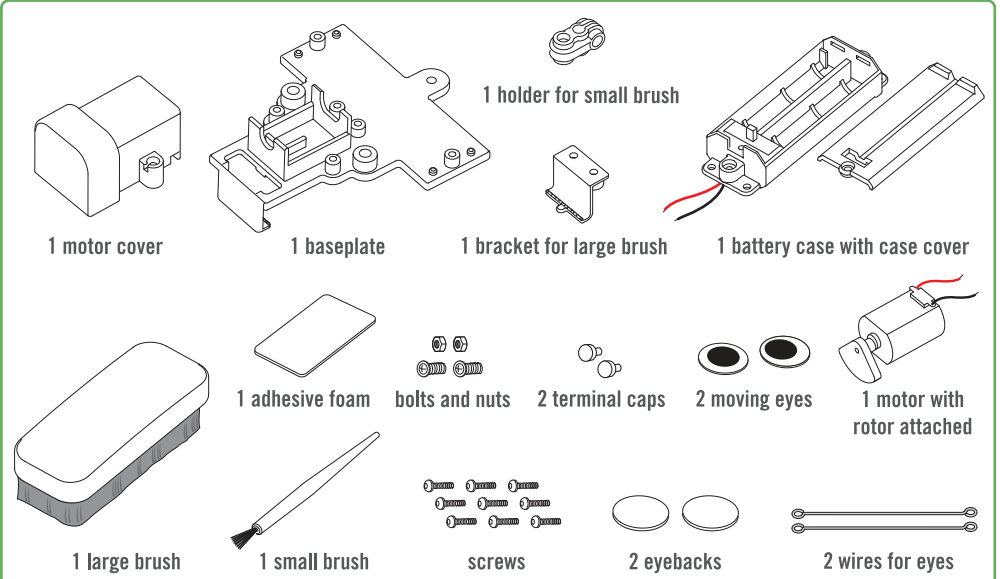
A. SAFETY MESSAGES

1. Adult supervision and assistance are required at all times.
2. This kit is intended for children ages over 8.
3. This kit and its finished product contain small parts which may cause choking if misused. Keep away from children under 3 years old.
4. To prevent possible short circuits, never touch the contacts inside the battery case with any metal.

B. USE OF THE BATTERIES

1. Requires two 1.5V "AAA" batteries (not included).
2. For best results, always use fresh batteries.
3. Make sure you insert the batteries with the correct polarities.
4. Remove the batteries from the kit when not in use.
5. Replace exhausted batteries straight away to avoid possible damage to the kit.
6. Rechargeable batteries must be removed from the kit before recharging.
7. Rechargeable batteries should be recharged under adult supervision.
8. Make sure that the supply terminals in the battery case are not short circuited.
9. Do not attempt to recharge non-rechargeable batteries.
10. Do not mix old and new batteries.
11. Do not mix alkaline, standard (carbon-zinc), or rechargeable batteries.

C. CONTENTS



Also required but not included: 2 x 1.5V “AAA” batteries, small crosshead screwdriver.

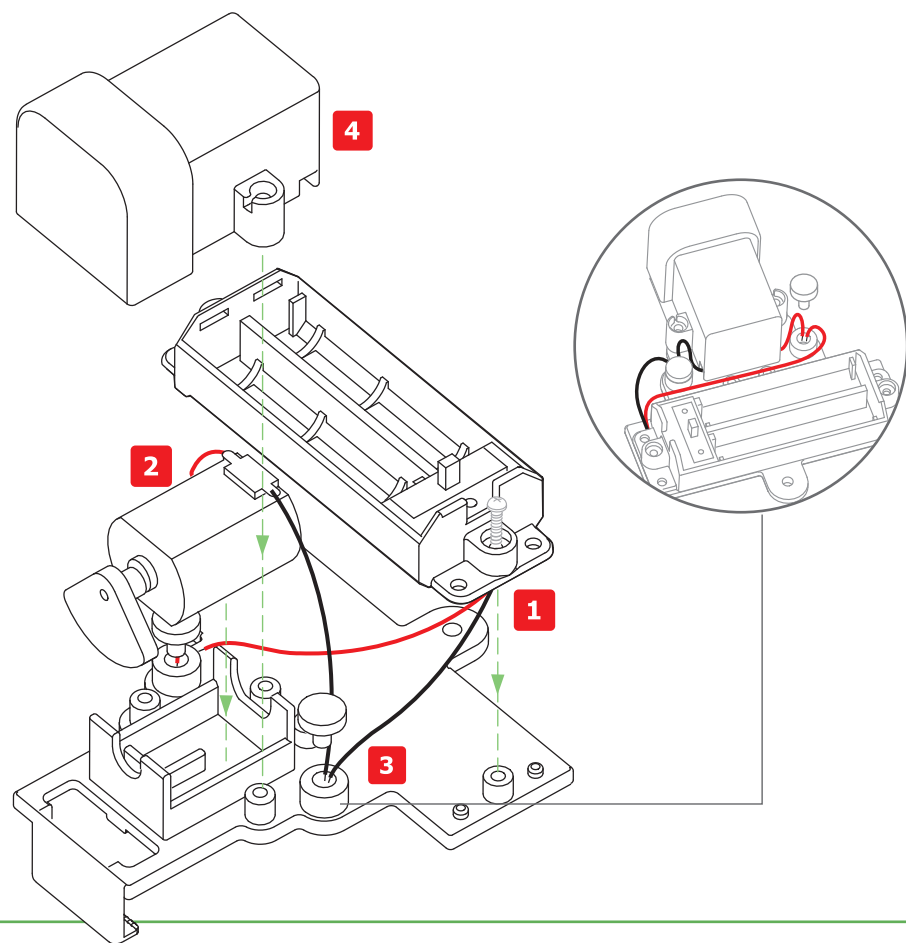
## D. ASSEMBLY

1. Examine the baseplate. The upper side is the side with the motor housing on it. Push the battery case onto the pins on this side of the baseplate. The wires from the case must exit through the slot under the switch towards the motor housing. Secure the cover with two screws.

2. Drop the motor into the housing on the baseplate, with the wire connections uppermost and closest to the battery case. Gently bend the wires over the back of the housing.

3. Now you need to connect the wires from the battery case to the wires from the motor. There are two terminal holes on the baseplate, one each side of the motor cover. Push the bare ends of the red wire from the battery case and the red wire from the motor into one hole. Push a terminal cap into the hole to trap and connect the wires. Repeat with the black wires in the other hole.

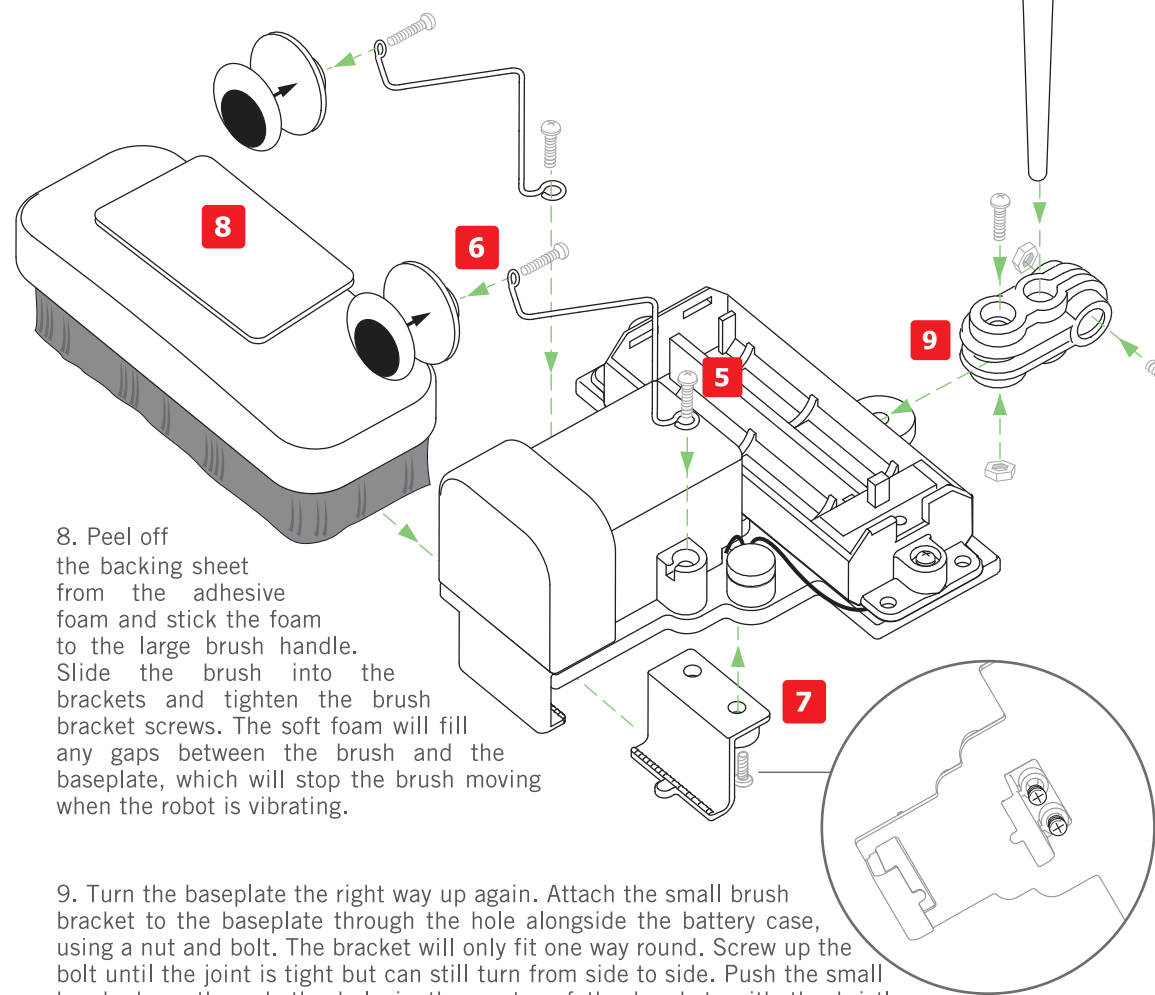
4. Push the motor cover over the motor. It should fit over the pins on the baseplate. Make sure that the motor wires fit through the two holes in the bottom of the cover without being trapped. Don't put in the motor cover screws yet.



5. Find one of the wires and a screw. Push the screw through the ring at one end of the wire. Now push the screw into one of the screw holes in the motor cover. There is a small slot next to the hole for the wire to fit through. Tighten the screw. Repeat with the other wire and another screw in the other hole in the cover.

6. Gently bend the two wires upwards. Attach the two eye backs to the ends of the wires with screws through the loops in the wires. Peel off the backing from the eyes and stick them to the eye backs.

7. Turn over the baseplate. Put the brush bracket in place and secure it loosely with two screws (don't tighten the screws until you add the brush in step 8).



8. Peel off the backing sheet from the adhesive foam and stick the foam to the large brush handle. Slide the brush into the brackets and tighten the brush bracket screws. The soft foam will fill any gaps between the brush and the baseplate, which will stop the brush moving when the robot is vibrating.

9. Turn the baseplate the right way up again. Attach the small brush bracket to the baseplate through the hole alongside the battery case, using a nut and bolt. The bracket will only fit one way round. Screw up the bolt until the joint is tight but can still turn from side to side. Push the small brush down through the hole in the centre of the bracket, with the bristles pointing upwards. Put a nut and bolt through the holes at the end of the bracket and tighten the bolt to hold the brush in place.

10. Insert two 1.5 V "AAA" batteries into the battery case. The negative terminal (the flat end) of each battery goes against one of the springs in the battery case. If the motor runs, switch the switch to turn it off. Attach the battery case cover with a screw.

Congratulations! Your Brush Robot is ready to go!

## E. OPERATION

Put your Brush Robot on a smooth surface such as a table top or tiled or wooden floor. Switch the switch on the battery case to make the motor run, and watch Brush Robot go!

Move the small brush up and down to make Brush Robot move backwards or forwards. The direction of movement depends on which way the large brush it tilted. You can tilt the large brush by moving the small brush up or down. The Robot's speed depends on the angle of the tilt (more tilt means higher speed).

You can make the Brush Robot steer left or right by turning the small brush bracket one way or the other. With the bracket straight (the brush in line with the centre of the large brush) the Robot should run in a straight line.

If you turn the small brush over, so that the bristles are pointing down, the Robot will tend to take a more random path.

Try making Brush Robot brush up dust from the floor.

How about having Brush Robot races with your friends?

